

# Operation Encompass

Solihull Early Years Settings and Childminders



Education and inclusion

We put children and young people at the heart of everything we do



# What is Operation Encompass?



- National safeguarding initiative
- Police share information after domestic abuse incidents
- Key Adult informed the next morning
- Helps staff provide timely emotional support
- Recognises children as victims (Domestic Abuse Act 2021)

Education and inclusion

We put children and young people at the heart of everything we do





## Domestic Abuse Act 2021

**“A child is a victim of domestic abuse if the child sees or hears, or experiences the effects of, the abuse.”**

*(Domestic Abuse Act 2021, Section 3)*

- Domestic abuse affects millions of adults each year, but its impact on children is often hidden.
- In Solihull, domestic abuse is recognised as a major factor affecting children’s wellbeing, safety and long-term outcomes.”
- **1 in 5 children** in the UK are estimated to have lived with domestic abuse at some point in their lives

Education and inclusion

We put children and young people at the heart of everything we do



# Why become an Operation Encompass Setting?

- Strengthens safeguarding and child protection
- Helps staff understand behaviour and emotional needs
- Enables timely, trauma-informed support
- Provides the opportunity for children feel safe, supported, and understood



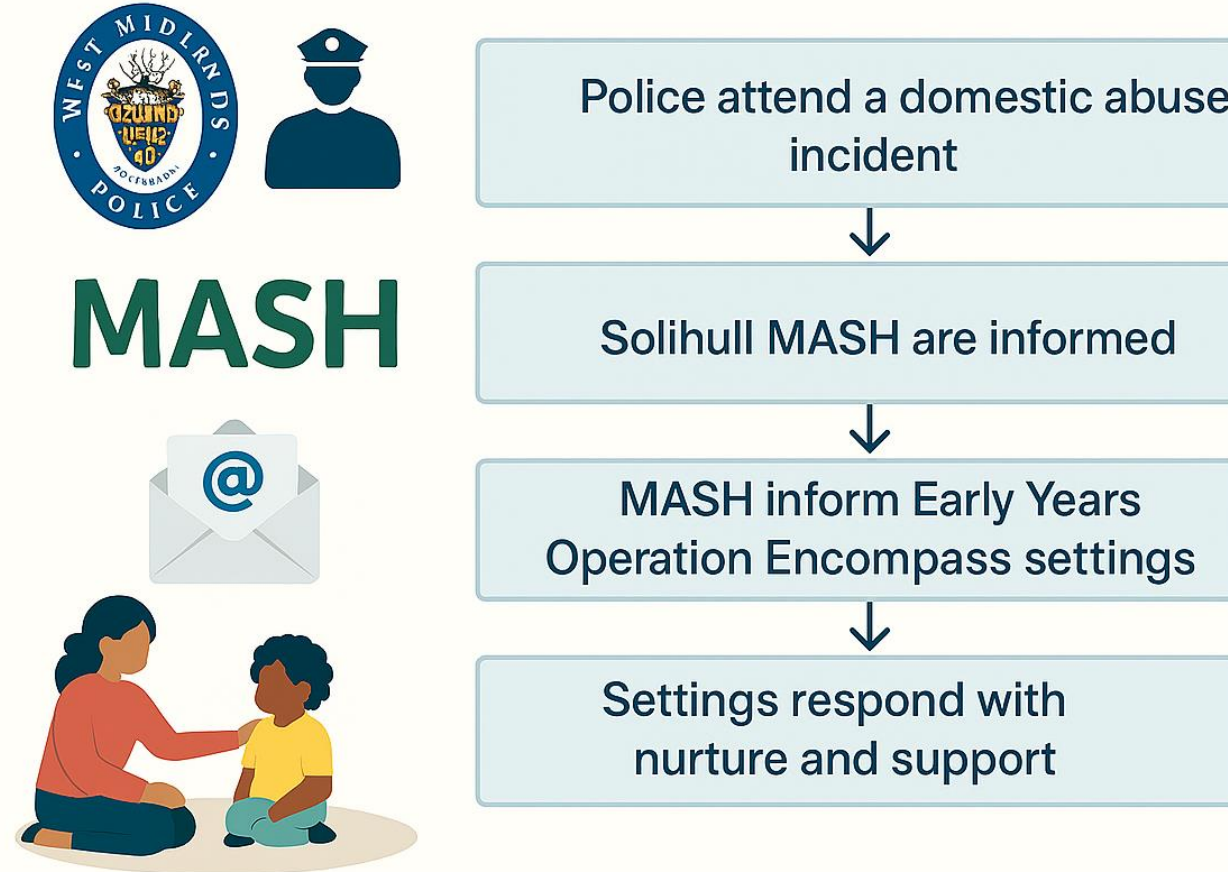
Education and inclusion

We put children and young people at the heart of everything we do



# How does Operation Encompass work in Solihull?

## Early Years Settings



Education and inclusion

We put children and young people at the heart of everything we do



## 1. Training

- DSL'S, Leaders and managers complete the Operation Encompass Key Adult training

## 2. Contact Email for Operation Encompass notifications

- **A secure email address** is required to receive Operation Encompass Notifications
- *Choose an email inbox that can be checked every morning by an appropriate person / DSL / Key Adult – [notifications are aimed to be sent by approximately 10am]*

## 3. Register your setting Solihull Early Years Team and MASH

- Email [eyeenquiries@solihull.gov.uk](mailto:eyeenquiries@solihull.gov.uk) from your secure dedicated email address
- Name of setting and contact number
- Names of trained Operation Encompass Key adults
- Copy of Key adult training certificates



<https://www.operationencompass.org>



# Important Operation Encompass Information

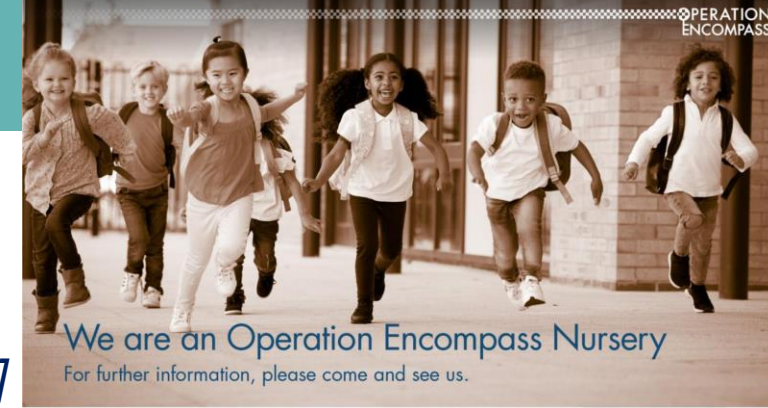
- **DO NOT send your certificate to West Midlands Police, as implied by the Operation Encompass training.**
  - ✓ Send your certificates and requested details, as previously advised, to the Early Years Enquiries email.
  - ✓ Please notify us of any changes to your Key Adults or contact details.
- **Complete the six-monthly Operation Encompass registration check-in form.**
  - ✓ Once a year, we will send a reminder email with a short form to confirm that your Operation Encompass-trained Key Adult(s) are still working at your setting. This ensures you remain registered to receive notifications.

Education and inclusion

We put children and young people at the heart of everything we do



# Resources and Further Information



- [Operation Encompass Key Adult training](#)
- [Operation Encompass Resources](#) [*Information, setting posters*]
- [Operation Encompass Guidance for Early Years Staff](#) [Video:13mins]
- [Solihull Safeguarding Partnerships Training](#) [*Modules on Domestic Abuse and Trauma informed Practice*]
- [Information for professionals | Help and advice about domestic abuse | Solihull Metropolitan Borough Council](#)
- [Homepage - Birmingham Solihull Women's Aid](#)
- [How to Protect Children From Domestic Abuse | NSPCC](#)

Education and inclusion

We put children and young people at the heart of everything we do

