

Stage 3: Preparing to Apply



What Ofsted expects before you apply



Knowledge, arrangements, documentation



Registration is a readiness check

Education and inclusion

We put children and young people at the heart of everything we do



What 'Ready' means?

Not graded

Not perfection

Not everything written

Your
knowledge
and
understanding

Legal responsibilities

Safeguarding

EYFS requirements

Education and inclusion

We put children and young people at the heart of everything we do

Safeguarding – Your Core Responsibility

Signs of abuse

Reporting concerns

Local procedures

Education and inclusion

We put children and young people at the heart of everything we do

Safeguarding – What You Must Know



SIGNS OF ABUSE



HOW TO
RESPOND



WHO TO REPORT
TO

Education and inclusion

We put children and young people at the heart of everything we do

Understanding your provider type



Childminder expectations



Group provider expectations



Premises responsibilities



.

Education and inclusion

We put children and young people at the heart of everything we do

Practical arrangements in place

Premises

People

Daily practice

Education and inclusion

We put children and young people at the heart of everything we do

Premises readiness

Safe and
suitable

Risk
assessment

Space for
children

Education and inclusion

We put children and young people at the heart of everything we do

Health and safety



RISK
ASSESSMENTS



FIRE SAFETY



HYGIENE
ROUTINES

Education and inclusion

We put children and young people at the heart of everything we do

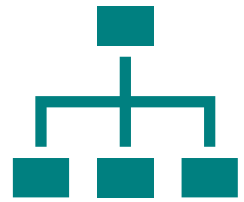
People and suitability



DBS checks



Qualifications



Supervision

Education and inclusion

We put children and young people at the heart of everything we do

Ratios and organisation

Age ranges

Adult to child ratios

Deployment

Key documentation



POLICIES



RECORDS



EVIDENCE OF
UNDERSTANDING

Education and inclusion

We put children and young people at the heart of everything we do

Safeguarding documentation

Safeguarding
policy

Child
protection
procedures

Whistleblowing

Education and inclusion

We put children and young people at the heart of everything we do

Core policies



BEHAVIOUR



HEALTH AND SAFETY



COMPLAINTS

Education and inclusion

We put children and young people at the heart of everything we do

Required records

Children's information

Attendance

Accidents and incidents

Education and inclusion

We put children and young people at the heart of everything we do

Proportionate documentation



Childminders: simple and manageable



Group settings: structured systems



Fit for purpose



What you should be ready to explain

How you keep children safe

How you meet the EYFS

How you run your provision

Education and inclusion

We put children and young people at the heart of everything we do

First Aid & Medical Arrangements



PAEDIATRIC FIRST
AID



MANAGING
ILLNESS



MEDICATION

Education and inclusion

We put children and young people at the heart of everything we do

Understanding the EYFS



STATUTORY
FRAMEWORK



LEARNING AND
DEVELOPMENT



WELFARE
REQUIREMENTS

Education and inclusion

We put children and young people at the heart of everything we do

Supporting Children's Learning



PLAY-BASED
LEARNING



OBSERVATION



NEXT STEPS

Education and inclusion

We put children and young people at the heart of everything we do

Inclusion and SEND

All children
included

Individual
needs

Working
with others

Education and inclusion

We put children and young people at the heart of everything we do

Behaviour and Relationships

- Positive behaviour
- Clear expectations
- Supporting emotions

Education and inclusion

We put children and young people at the heart of everything we do

Policies and Procedures



REQUIRED
POLICIES



FIT FOR
PURPOSE



USED IN
PRACTICE

Education and inclusion

We put children and young people at the heart of everything we do

Staff and Suitability

Suitable adults

Safer recruitment

Supervision

Education and inclusion

We put children and young people at the heart of everything we do

Knowing Your Own Provision

Your environment

Your routines

Your role

Education and inclusion

We put children and young people at the heart of everything we do



Are you ready to apply?

Knowledge in place

Arrangements considered

Key documents ready

Common misconceptions



“I need everything perfect”



“I need a full curriculum”



“I need lots of paperwork”



Education and inclusion

We put children and young people at the heart of everything we do

What happens next



Stage 4: The application process



What happens after you apply

Education and inclusion

We put children and young people at the heart of everything we do