

HUB ACTIVITIES

2025-2026

Where connections flourish and practice evolves



Explore all
activities



Tap the live calendar links to explore and book activities—more will be added over the summer!



July 2025 Edition



Helping Early years practitioners to Apply
Research to Teaching and learning

SIGN UP

Newsletters and weekly
emails directly to your inbox

Follow, like, share



JULY/AUGUST 2025



SUN	MON	TUE	WED	THU	FRI	SAT
	28 Leaders+ Managers Network: Developing your Climate Plan [1pm-3pm]	29	30	31	01	02
03	04	05	06	07	08	09
10	11	12	13 Supporting Self Regulation [10am-11am] OR [6pm - 7pm]	14	15	16
17	18	19	20	21	22	23
24	25	26	27	28	29	30
31						



Our Networks



Leaders + Managers



Childminders



Nurture



Special Educational
Needs + Disability [SEND]



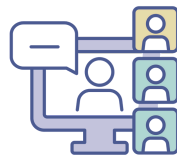
Physical Development:
Move to Thrive



Inspiration



Story Weaver - coming
soon!



Webinars



Topics aligned to
current priorities

SEPTEMBER 2025



SUN	MON	TUE	WED	THU	FRI	SAT
31	01	02	03	04	05	06
07	08 Childminder Network (in person) [9:30am-11:30am]	09	10	11	12	13
14	15 Childminder Network (in person) [9:30am-11:30am]	16	17	18	19	20
21	22 Childminder Network (in person) [9:30am-11:30am]	23	24	25 Nurture Network Session 1 of 4 Transition and Learning 10am-12pm] OR [6pm-8pm]	26	27
28	29 Childminder Network (in person) [9:30am-11:30am] PD Network: Move to Thrive The 8 Sensory Systems with Helen Battelley [10am-11am]	30 Nutrition Essentials 9.30-11am SEND Network Golden Key Session 1 of 4 [1pm-3pm] OR [6pm-8pm]				



Our Networks



Leaders + Managers



Childminders



Nurture



Special Educational
Needs + Disability [SEND]



Physical Development:
Move to Thrive



Inspiration



Helicopter Stories -tbc



Webinars



Topics aligned to
current priorities

OCTOBER 2025



SUN	MON	TUE	WED	THU	FRI	SAT
		30	01 Boost your EYPP impact: Recorded webinar using EEF guidance out this month.	02	03	04
05	06 Childminder Network (in person) [9:30am-11:30am]	07 SEND Network Golden Key Session 2 of 4 [1pm-3pm] OR [6pm-8pm]	08	09	10	11
12	13 Childminder Network (in person) [9:30am-11:30am]	14 SEND Network Golden Key Session 3 of 4 [1pm-3pm] OR [6pm-8pm]	15	16	17	18
19	20 Childminder Network (in person) [9:30am-11:30am]	21 SEND Network Golden Key Session 4 of 4 [1pm-3pm] OR [6pm-8pm]	22 Childminder Network Navigating the new Ofsted Framework	23	24	25
26	27	28	29	30	31	



Our Networks



Leaders + Managers



Childminders



Nurture



Special Educational
Needs + Disability [SEND]



Physical Development:
Move to Thrive



Inspiration



Helicopter Stories –tbc



Webinars



Topics aligned to
current priorities

NOVEMBER 2025



SUN	MON	TUE	WED	THU	FRI	SAT
				30	31	01
02	03 Childminder Network (in person) [9:30am-11:30am]	04	05 Helicopter Stories Network Launch TBC	06 Leaders + Managers Network: Making Effective use of EYPP 9.30-11.00am OR 4.00-5.30pm	07	08
09	10 Childminder Network (in person) [9:30am-11:30am]	11	12	13	14	15
16	17 Childminder Network (in person) [9:30am-11:30am]	18	19	20	21	22
23 30	24 Childminder Network (in person) [9:30am-11:30am]	25 PD Network Move to Thrive Progressing to PE with Helen Battelley [10am-11am]	26	27 Nurture Network Session 2 of 4 Behaviour + Communication [10am-12pm] OR [6pm-8pm]	28	29



Our Networks



Leaders + Managers



Childminders



Nurture



Special Educational
Needs + Disability [SEND]



Physical Development:
Move to Thrive



Inspiration



Helicopter Stories -tbc



Webinars



Topics aligned to
current priorities

DECEMBER 2025



SUN	MON	TUE	WED	THU	FRI	SAT
30	01 Childminder Network (in person) [9:30am-11:30am]	02 Inspiration Network with Julie Fisher Starting from the Child? [10am-11.30am]	03	04	05	06
07	08 Childminder Network (in person) [9:30am-11:30am]	09 PD Network Move to Thrive Baby Music + Sensory Play with Helen Battelley [10am-11am]	10	11	12	13
14	15	16	17	18	19	20
21	22	23	24	25	26	27
28	29	30	31			



Our Networks



Leaders + Managers



Childminders



Nurture



Special Educational Needs + Disability [SEND]



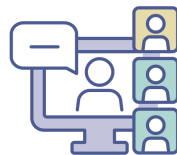
Physical Development: Move to Thrive



Inspiration



Helicopter Stories -tbc



Webinars



Topics aligned to current priorities

JANUARY 2026



SUN	MON	TUE	WED	THU	FRI	SAT
		30	31	01	02	03
04	05	06	07	08	09	10
11	12	13 Inspiration Network with Ruth Swailes Unique Child, Unique Curriculum [10am-11.30am]	14	15	16	17
18	19	20 Strengthening Supervision - what's important? 10-11am	21	22	23	24
25	26	27	28	29 Nurture Network Session 3 of 4 Safe Spaces + Wellbeing [10am-12pm] OR [6pm-8pm]	30	31



Our Networks



Leaders + Managers



Childminders



Nurture



Special Educational Needs + Disability [SEND]



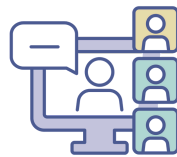
Physical Development: Move to Thrive



Inspiration



Helicopter Stories -tbc



Webinars



Topics aligned to current priorities

FEBRUARY 2026



SUN	MON	TUE	WED	THU	FRI	SAT
01	02	03	04	05	06	07
08	09	10 Leaders + Managers Network Strengthening Supervision – what does in mean in practice?	11 Childminder Network Strengthening Supervision	12	13	14
15	16	17	18	19	20	21
22	23	24	25 Inspiration Network with Greg Bottrill 'Koselig – the Warmth of Time Together' [10am–11:30am]	26	27	28



Our Networks



Leaders + Managers



Childminders



Nurture



Special Educational
Needs + Disability [SEND]



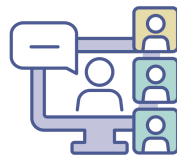
Physical Development:
Move to Thrive



Inspiration



Helicopter Stories –tbc



Webinars



Topics aligned to
current priorities

MARCH 2026



SUN	MON	TUE	WED	THU	FRI	SAT
01	02	03	04	05	06	07
08	09	10	11	12 Nurture Network Session 4 of 4 Embedding Practice [10am-12pm] OR [6pm - 8pm]	13	14
15	16	17	18	19	20	21
22	23	24	25	26	27	28
29	30	31				



Our Networks



Leaders + Managers



Childminders



Nurture



Special Educational
Needs + Disability [SEND]



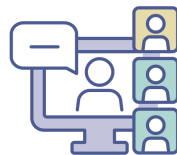
Physical Development:
Move to Thrive



Inspiration



Helicopter Stories -tbc



Webinars



Topics aligned to
current priorities

HUB ACTIVITIES

Where connections flourish and practice evolves

WATCH NOW



Explore our collection
of Short Sparks from
the HEART

'Short Sparks' sessions are quick, bite-sized learning opportunities that can be completed in under 45 minutes. Perfect for watching or listening to during your lunch break!

[Introduction to the Six Principles of Nurture](#)

[Getting Ready for Climate Action](#)

[Nurturing Staff Wellbeing](#)

[My home as a playground
.\[Childminders\]](#)

[Physical Development](#)

[The WellComm Toolkit](#)



Comments, compliments,
questions or suggestions for future
activities to meet your needs?

CONTACT US

SCAN ME

