

Family Hubs Solihull



January 2025

Children's Services

We put children and young people at the heart of everything we do



1

Family Hub Offer for Solihull



The Family Hub offer includes a combination of **hub buildings, outreach and digital services for families with children aged 0-19 (25 SEND).**

In Solihull we now have:

- **4 Hub buildings** (Evergreen in Kingshurst, Elmwood in Smith's Wood, Riverside in Chelmsley Wood and Hatchford Brook in Elmdon)
 - Operating **weekdays** and **evenings**.
- **Outreach** venues, where part-time services and activities take place in **community venues**
- **Digital offer for the whole borough**
- (e.g. website, online groups, advice, App, Facebook page)





Children's Services

We put children and young people at the heart of everything we do



2

DfE/DHSC <u>Service Expectations</u>		
1	Activities for children aged 0-5	
2	Employment Support	
3	Debt and welfare advice	
4	Domestic abuse support	
5	Early Language and the Home Learning Environment	
6	Early Childhood Education and Care (ECEC) and financial support	
7	Health Visiting	
8	Housing	
9	Infant Feeding Support	
10	Intensive targeted family support	
11	0-19 public health services	
12	Mental health services	
13	Maternity Services	
14	Nutrition & weight management	
15	Oral health improvement	
16	Parent-Infant Relationships & Perinatal MH Support	
17	Parenting Support	
18	Reducing Parental Conflict	
19	SEND support and services	
20	Stop smoking support	
21	Alcohol/drug use support	
22	Support-separated parents	
23	Youth justice services	
24	Youth services	

& safeguarding

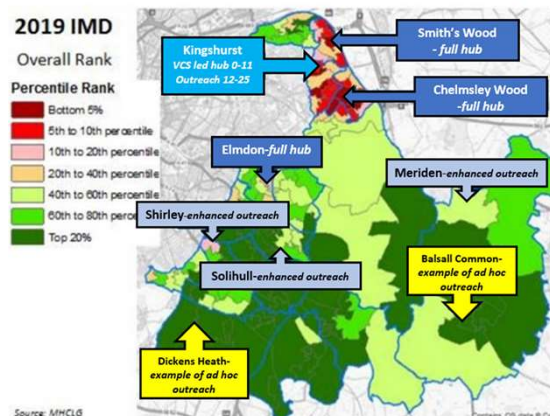
Children's Services

We put children and young people at the heart of everything we do

3

Family Hub Outreach Offer

- Hub locations identified in **Areas of higher need** based on key outcome data to address local inequalities.
- Locations that are **Accessible** - public transport, close to amenities – where families already go.
- Enhanced Outreach in Shirley Heath Primary School – Enhanced Offer Monday to Thursday during term time.
- Library spaces in central Solihull, Olton and Meriden identified for outreach during their opening hours and out of hours agreement in place.



Children's Services

We put children and young people at the heart of everything we do



4

Where are we now?

4 Hub Buildings & Outreach Offer.
Opened May, June and September 2024.
Consistent feel, welcome and branding.



Solihull
Family Hubs



5

Early successes



**"The Hub is an
invaluable resource
to the community."**

A foster parent with a 6-month old baby boy arrived at the Hub searching for fun activities to support his development.

He took part in a stay and play and enjoyed playing with other children, gurgling and smiling at them!

They loved the sensory room in particular and the parent spoke of the value of the Hub for children who are looked after in Solihull to get the best start in life.

Image does not depict the children or adults described above




Children's Services

We put children and young people at the heart of everything we do



6



“We were overwhelmed and didn’t know where to get help.”


A newly-arrived family came into the Hub to seek help about school places. They arrived in the UK only five days prior.

Staff called the school admission staff and helped the family complete and send across the necessary forms, securing a mid-year transfer for their child!

They bumped into another family who had also recently arrived in the local area, and spent time sharing and learning about each other’s experiences.

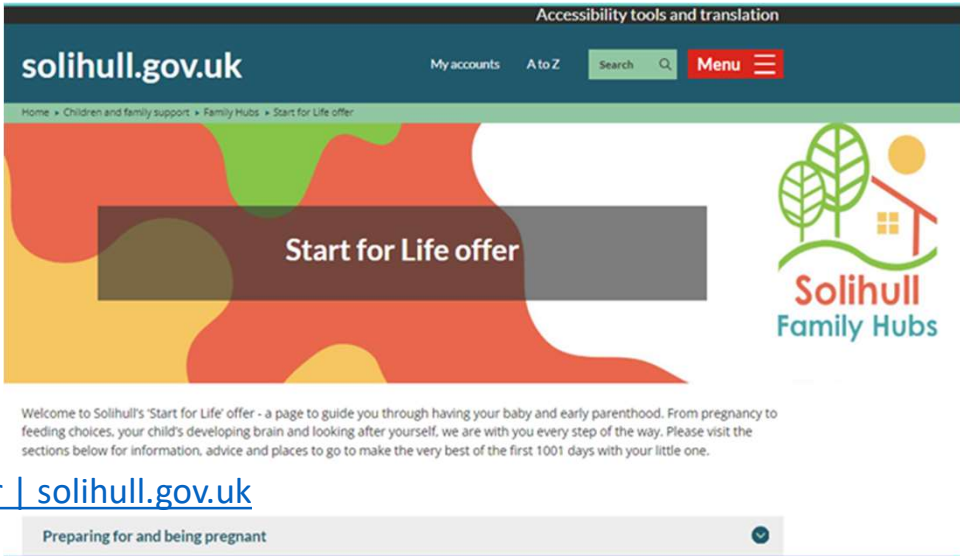
Image does not depict the children or adults described above

Children’s Services
We put children and young people at the heart of everything we do



7

Solihull Start for Life offer



solihull.gov.uk

Home » Children and family support » Family Hubs » Start for Life offer


Start for Life offer

Welcome to Solihull’s ‘Start for Life’ offer - a page to guide you through having your baby and early parenthood. From pregnancy to feeding choices, your child’s developing brain and looking after yourself, we are with you every step of the way. Please visit the sections below for information, advice and places to go to make the very best of the first 1001 days with your little one.

[Start for Life offer | solihull.gov.uk](https://solihull.gov.uk)

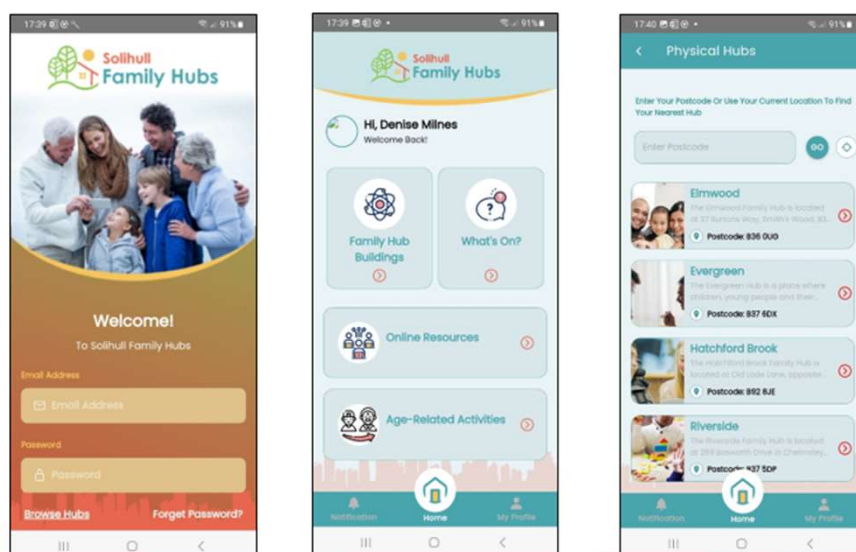
Preparing for and being pregnant

Children’s Services
We put children and young people at the heart of everything we do



8

Family Hub App



The app is on
[Google Play](#) and
[Apple App Store](#)

Children's Services

We put children and young people at the heart of everything we do



9

Contacting the Hubs

Download the Solihull Family Hubs app!



Android



Apple

www.solihull.gov.uk/family-hubs

[Solihull Family Hubs | Facebook](#)

Elmwood Family Hub – Smiths Wood

Catherine Price (Hub Co-ordinator)

Elmwoodfh@solihull.gov.uk



Riverside Family Hub – Chelmsley Wood

Louise Sparkes (Hub Co-ordinator)

Riversidefh@solihull.gov.uk

Hatchford Brook Family Hub – Elmdon

Shelly Curtis (Hub Co-ordinator)

Hatchfordbrookfh@solihull.gov.uk

Evergreen Family Hub - Kingshurst

Marie Dunne (Hub Co-ordinator)

maried@colebridge.org

Children's Services

We put children and young people at the heart of everything we do



10