

Reshaping Education Consultation Launch

Monday 26th April – Friday 28th May 2021



Key issues driving the need for change

- Outcomes
- Changing role of LA's in Education
- Funding



Outcomes

- Outcomes for most CYP are good
- Educational performance in-line or above average
- Most happy and satisfied
- Less bullying
- Healthier lives



Children & Young People in Solihull

- Worried and less confident
- Rising number of vulnerable children
- Exclusions
- Increase in EHE, CiC & EHCPs
- Early Years
- Access to Education



Against a backdrop of

- Funding reducing/redirected
- Increasingly diverse school system and system leaders
- School recruitment
- Covid



The Role of the Council

- Ensuring the system works
- Improving outcomes for vulnerable children
- Acting as champions for all parents and families



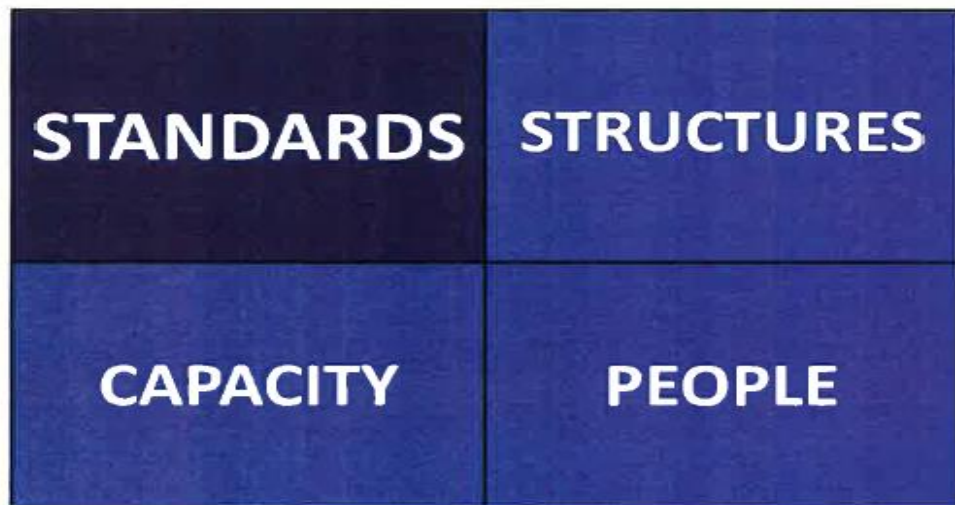
The Role of the Council

- Ensuring the system works
- Improving outcomes for vulnerable children
- Acting as champions for all parents and families



The RSC View

“From MASS CONVERSION to MASS IMPROVEMENT”

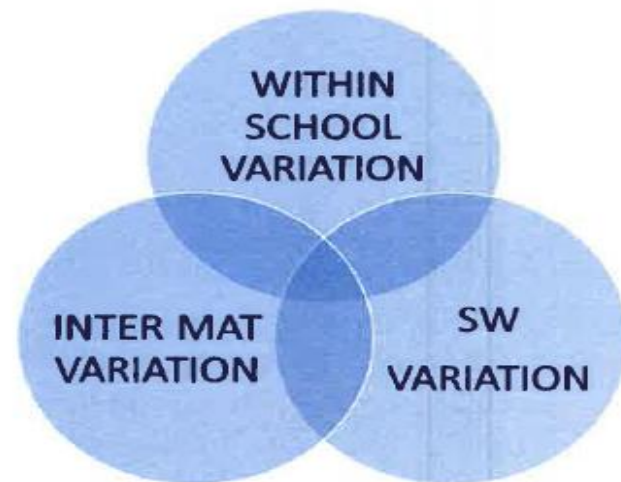


1. **The progress and attainment of our most disadvantaged children**, we need to focus on progression from 3-19, “keep up not catch up”
2. **The progress and attainment of our most talented children**, building an entitlement which delivers choice
3. **Meeting the challenge of rurality and sparsity**, in many parts of our region our schools underpin the fabric of local communities, how can we think strategically to safeguard their futures?
4. **Embedding system leadership** and bringing coherence to the moving parts



Ad hoc development with no guiding principles

A pre-designed blueprint with no system choice



Our Vision

Transforming life chances by holding children and young people at the heart of everything we do



Our Purpose

To be ambitious for children and young people - ensuring all have access to a high quality inclusive education which empowers them to lead independent and successful lives



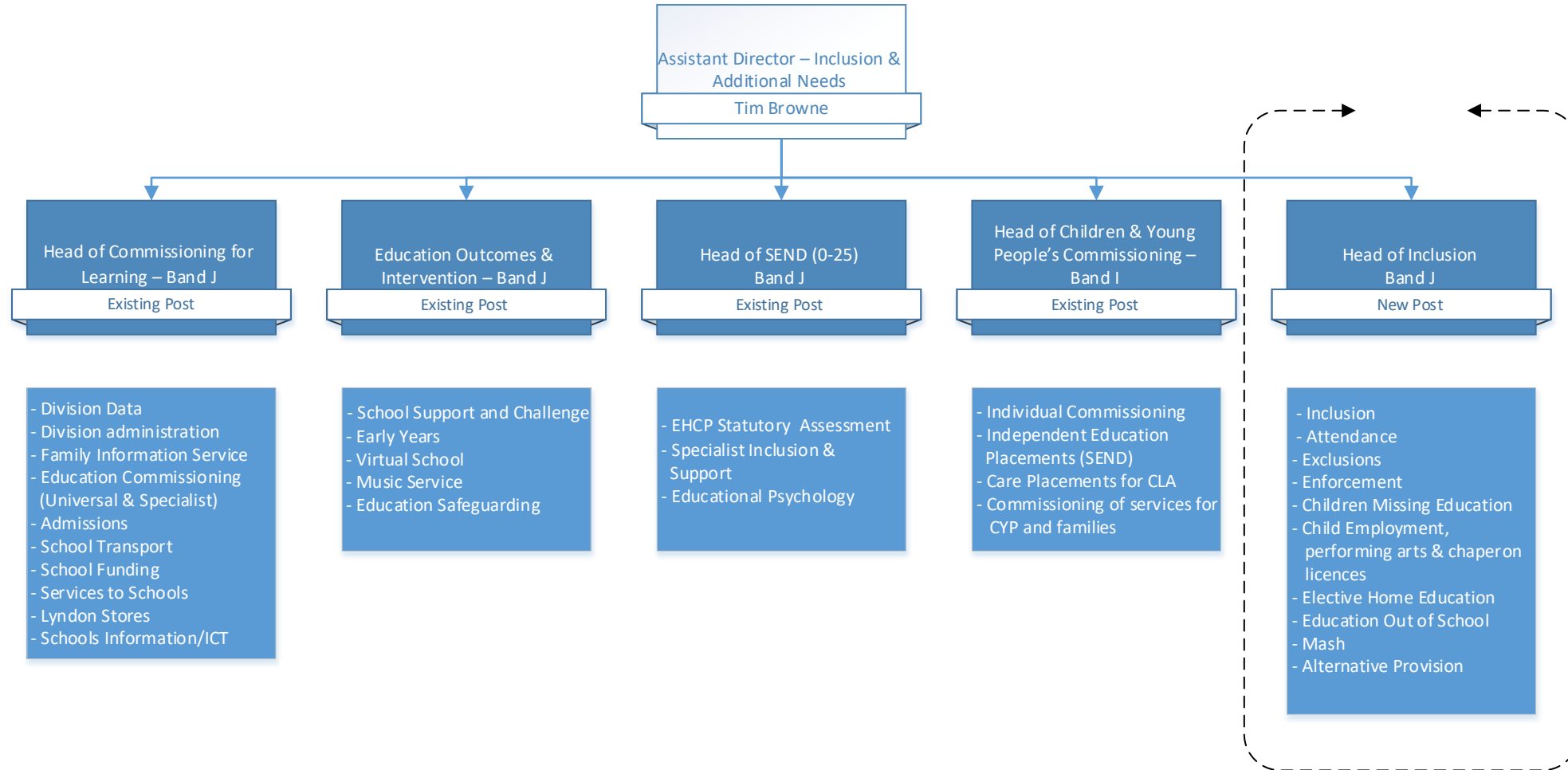
Our Approach

We will champion children and families to ensure better outcomes in a culture where *every child matters and matters equally*. We believe that we will achieve this through:

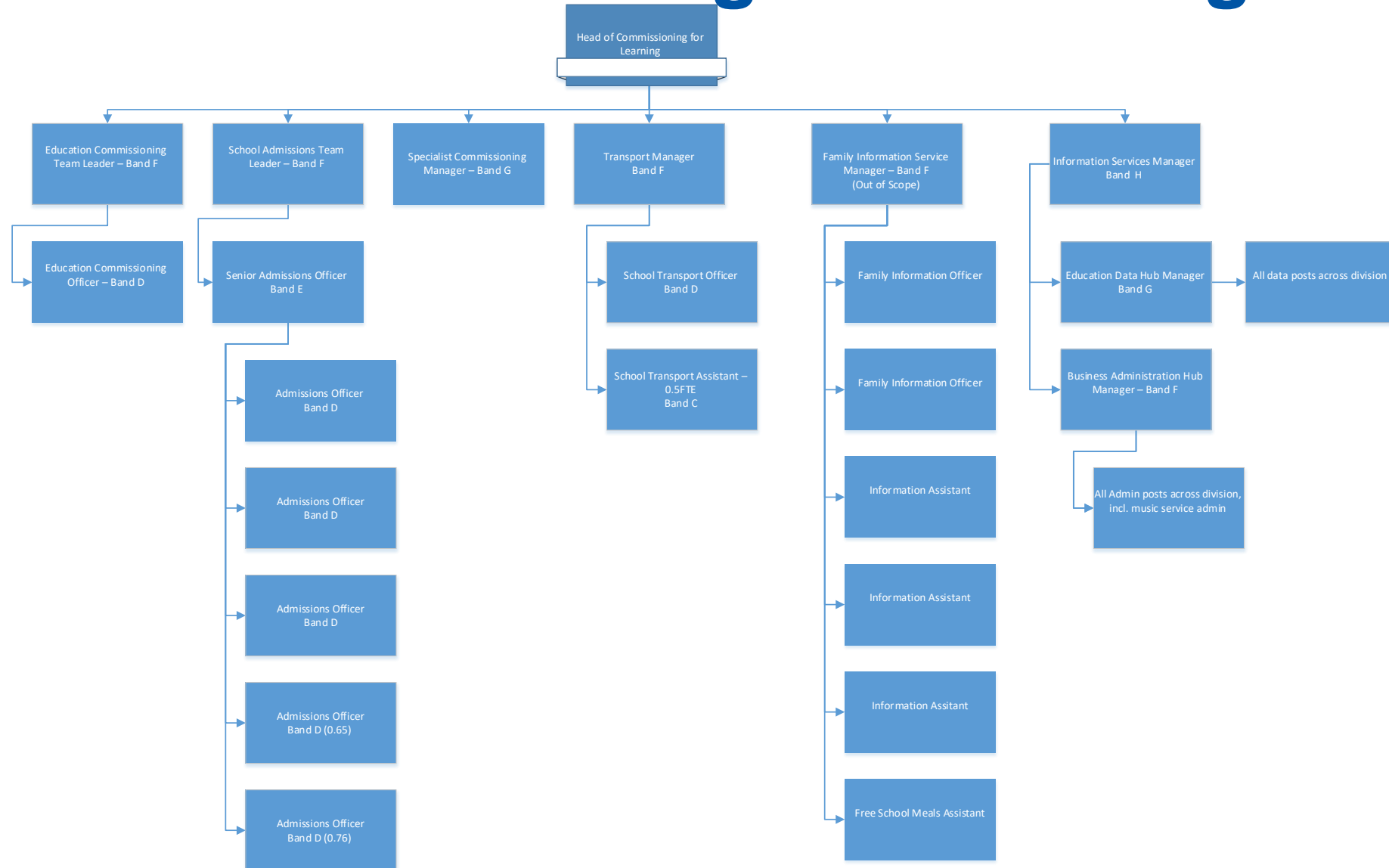
- Pre-empting and facing challenges before they arise
- Passing the baton effectively
- Working together and with others
- Working creatively, not just following a set process
- Taking responsibility and not walking by
- Holding ourselves and each other to account
- Child at heart
- Putting ourselves in the shoes of children, young people and their families.



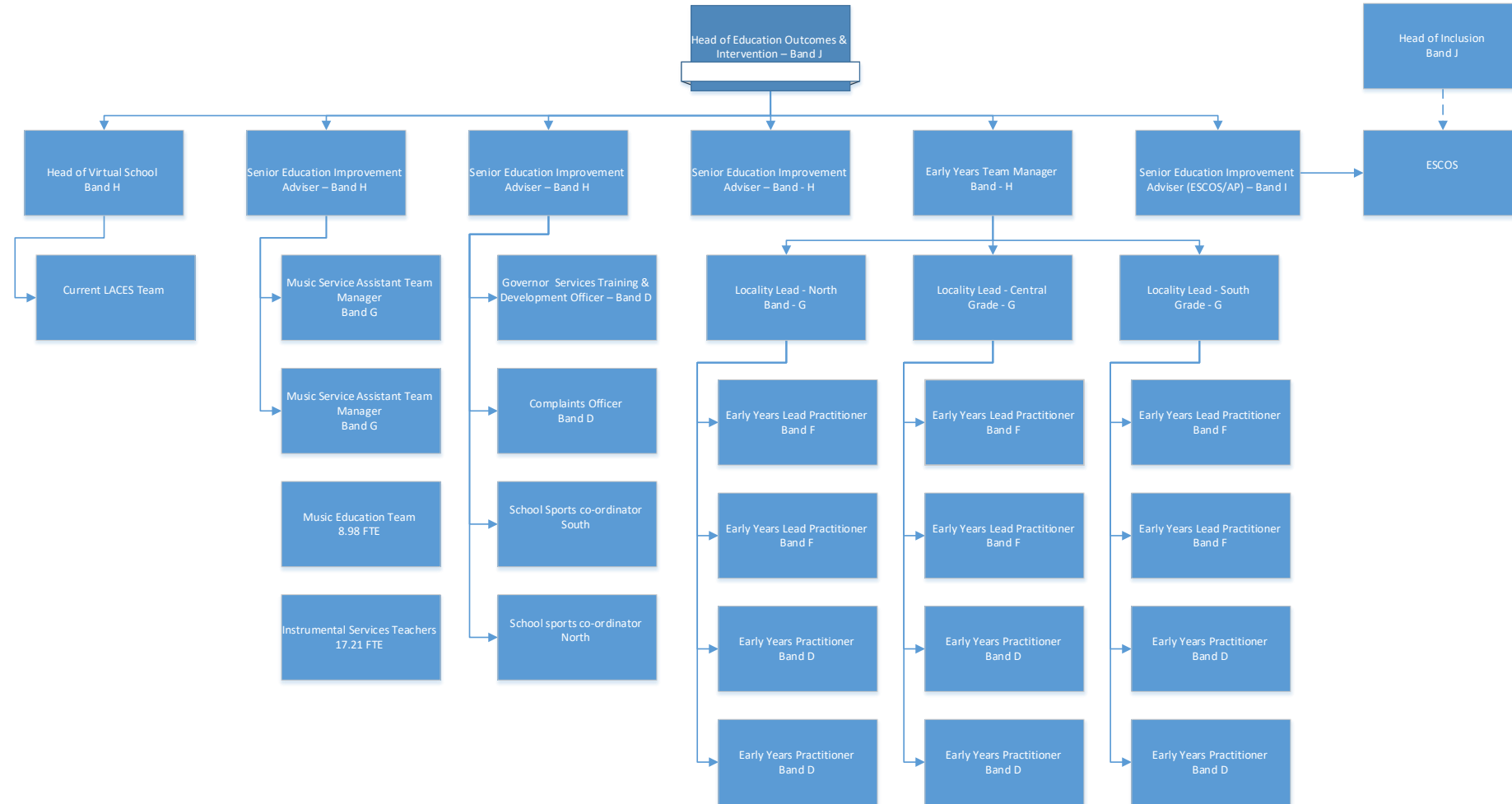
Proposed Structure



Commissioning for Learning



Education Outcomes & Intervention



New Inclusion Service



Questions

