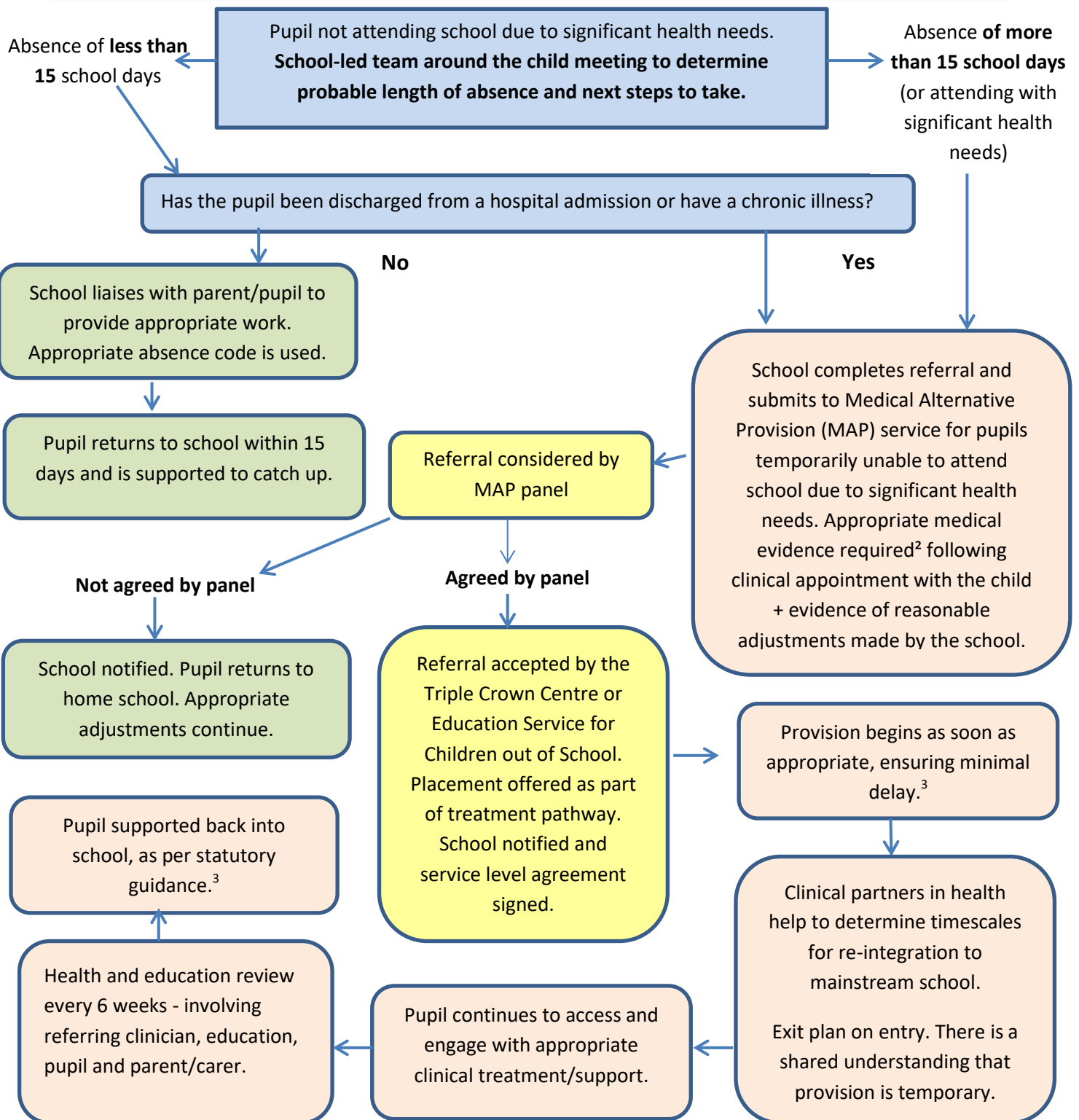


Solihull Medical Alternative Provision Pathway for Supporting Pupils with Significant Health Needs

Schools meet their statutory responsibilities to support pupils with medical conditions.¹ There is a presumption that most health needs will be met by the home school with appropriate adjustments.



¹ Supporting pupils at school with medical conditions: statutory guidance for governing bodies of maintained schools and proprietors of academies in England, DfE 2015

² Appropriate medical evidence: Senior Clinical Psychologist, Consultant Psychiatrist, Associate Specialist Psychiatrist, Community Paediatrician, Hospital Consultant. Evidence from a GP will only be considered where specific medical evidence from an appropriate clinician is delayed. The GP must provide accompanying evidence that specialist referrals have been made.

³ Ensuring a good education for children who cannot attend school because of health needs: statutory guidance for local authorities, DfE 2013