

# Energy at Shirley Heath School



# Energy Audit

## Energy Audit Identified – LED replacement

- Energy Audit identified lots of old bulbs like T8 and T12's should be considered for replacement with LED's
- Audit suggested that priority to be give to external lights
- Rooms with high ceilings such as halls (which will also save on maintenance cost as to change them you need a platform)

## Result & Action

The school replaced the main hall, and dining area, and 5 classrooms with LED lights

T8  
1" diameter



T12  
1.5" diameter



**£8,425**

# Energy Audit

## Energy Audit Identified – LED replacement Hall



After



before

# Energy Audit

## Energy Audit Identified – LED replacement Dining Room



After



before

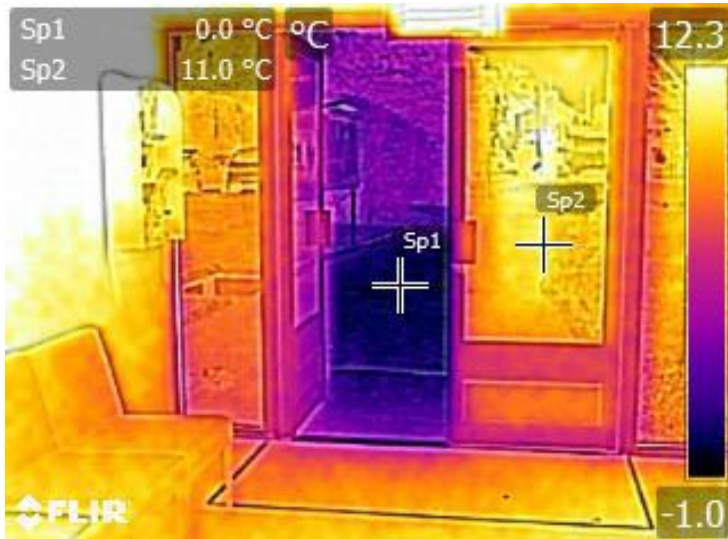
# Energy Audit

Energy Audit Identified – LED replacement classroom



# Energy Audit

## Energy Audit Identified - Draughts



➤ Doors being left open



## Result & Action

Site installed **plastic curtains** into two classrooms.



# Energy Audit – Future Plans

## Energy Audit Identified – LED & Uninsulated Pipework

- Replacing external / car park lights with LED
- There are a few issues of uninsulated pipework in the school, which contribute heat to the room, sometimes welcomed, but generally it will not be as it's not controllable.
- The cost to insulate these pipes is low to medium and gives quite good payback, but more importantly stops this uncontrolled heat and helps prevent discomfort.

## Future plans

- Change outside lighting to LED
- Insulate Heating pipes

### Library

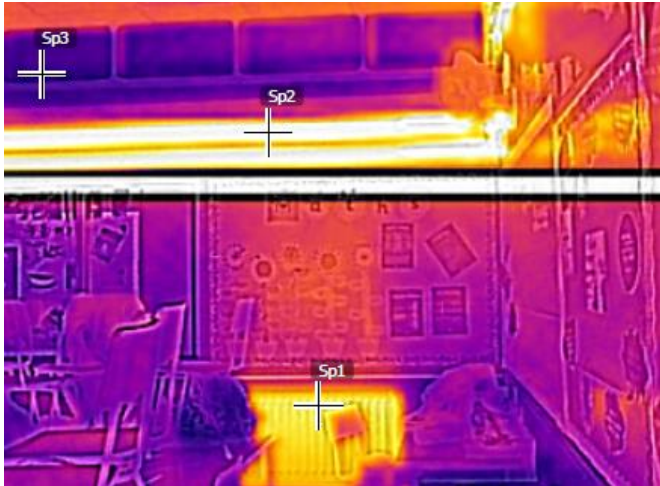


### Library:

This room is very warm, because of the very hot radiator and the uninsulated pipework is the main cause.

# Energy Audit – Future Plans

## Energy Audit Identified – Uninsulated Pipework



## Future plans

This school wants to tackle uninsulated pipework and the energy audit identified that 4ED: the radiator is hot and the uninsulated heating pipes are thick and travelling around the room leaking heat in to the room. At 25oC it is overheating this room, a good 7oC above the guidelines.

## Message

Use your energy audits we did!

